

Parking/Traffic Planning

Principles and Considerations

- TOH completed series of parking studies and assessments as well as traffic plans over last 5 years. Significant shortage and poor locations for parking access for patients/families.
- Parking development options must take into consideration service distribution, effective access points for patients/families and traffic patterns.
- Loading docks and truck access will continue to access on Ruskin until new campus is developed.
- UOHI (current/expanded) and north east corner of campus significant patient care volumes for inpatient and outpatient activity.
- Volumes will continue to increase and current Ruskin street parking/traffic situation has many challenges that need to be resolved in any option (in advance of new hospital).
 - Requires solution to create a new effective and efficient traffic/parking and patient access plan on the Ruskin Street Lot.
- Ruskin parking lot is to be returned to green space when Civic Campus relocated to new site (site plan commitment)

JUNE 2013



Ruskin Parking Garage Option

- Multiple options assessed for garage development
 - Ruskin above ground option is most cost effective parking capacity plan and access for patient/families.
 - In all options Ruskin lot needs to be completely overhauled due to current congestion and physical challenges.
- Creates more effective traffic patterns and circulation on Ruskin avenue for both car and truck traffic (traffic studies).
- Garage will not breach tree-line (site plan agreement)
 - Additional trees and foliage in addition to what exists.
- Must be a structure that can be easily removed when new civic campus built.
 - Current design allows for pre-cast panels to be re-used and relocated.

JUNE 2013





45 RUSKIN LOT

HUTCHISON AVE

MACFARLANE AVE

PARKDALE AVE

RUSKIN ST

OTTAWA HOSPITAL
CIVIC CAMPUS

MELROSE AVE

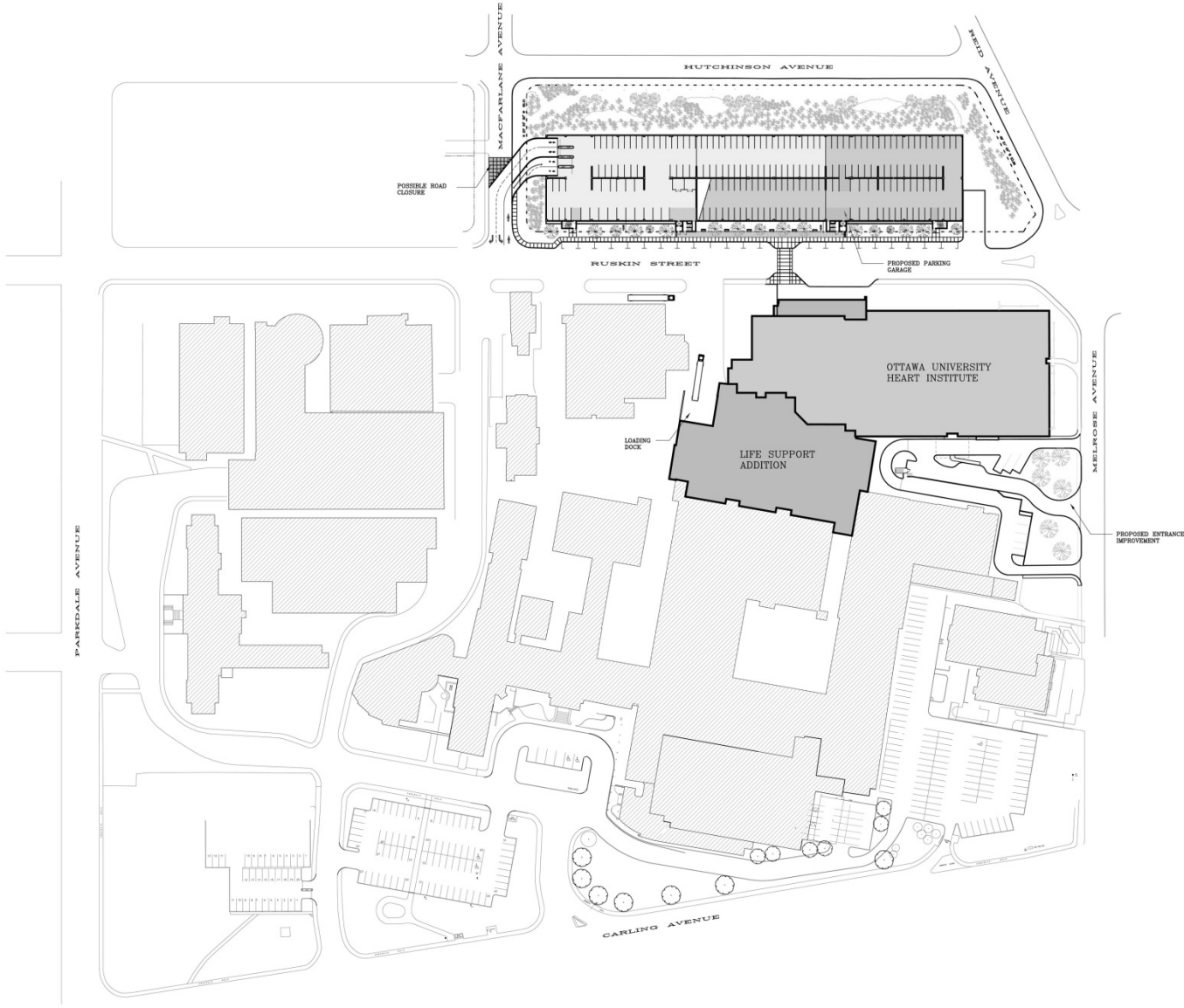
CARLING AVE



JUNE 2013



The Contractor shall check and verify all dimensions on site. This drawing is not to be used for construction unless stamped and signed by the Engineer. Do not scale drawings. Copyright reserved. This drawing is the exclusive property of Cleland Jardine Engineering Ltd.



No.	DATE	REVISIONS	BY
1	MAY 17/13	ISSUED FOR REVIEW	ME

PROJECT NORTH

STAMP

CLELAND JARDINE ENGINEERING LIMITED
 500 TERRY FOX DRIVE, SUITE 200
 KANATA, ONTARIO, K2L 1B9
 TEL: (613) 891-1533 FAX: (613) 891-1703
 e-mail: mail@clelandjardine.com

PROJECT
**THE OTTAWA HOSPITAL
 CIVIC CAMPUS
 RUSKIN GARAGE**

DRAWING
HOSPITAL SITE PLAN

DRAWN: M. EPPICH
 DESIGNED: A. MARCOUX
 DATE: MAR. 26/13
 SCALE: **S106**
 PROJECT No: 12-0273





HEART INSTITUTE & PARKING GARAGE - AERIAL VIEW LOOKING EAST ON RUSKIN STREET

JUNE 2013





JUNE 2013





RUSKIN STREET LOOKING EAST

JUNE 2013





RUSKIN STREET LOOKING WEST

JUNE 2013





RUSKIN STREET LOOKING WEST

JUNE 2013

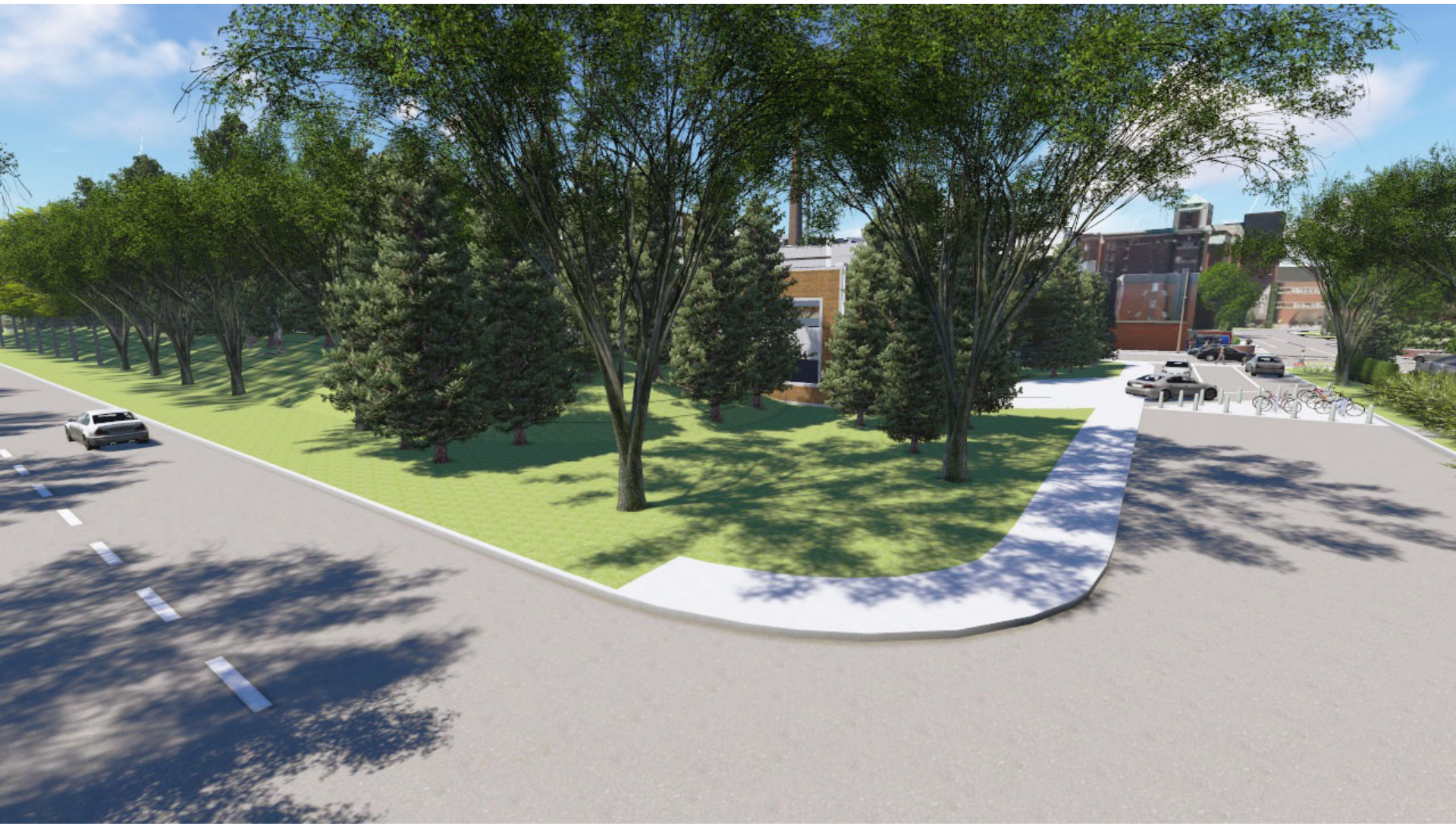




PEDESTRIAN CROSSING BETWEEN HEART INSTITUTE & PARKING GARAGE

JUNE 2013





PARKING GARAGE ENTRY OFF MacFARLANE AVENUE - CORNER OF HUTCHISON AVENUE

JUNE 2013

